



## **BTC**

### **Oven Bearing**

BTC bearings are engineered for ceramic oven with roller system. The bearings work outside of the oven at usual temperature of  $+20^{\circ}/+80^{\circ}\text{C}$ . For this application usually do not need high temperature bearings, but due to the characteristics of the ovens sometimes there is a need to change the ceramic rollers inside the ovens without stopping the production.

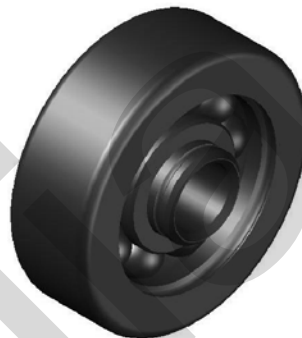
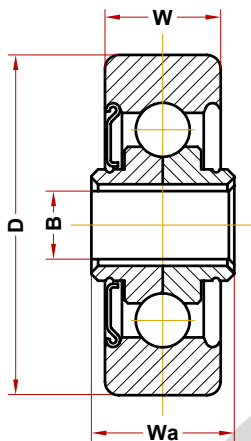
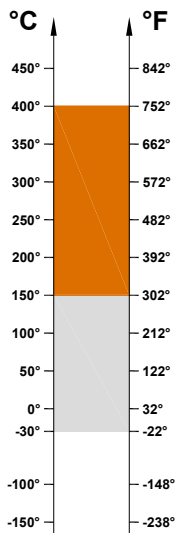
During this operation the ceramic rollers should be taken out of the oven with working temperature of around  $800^{\circ}\text{C}$ . During this operation the ceramic rollers temperature go down till the temperature of the local environment, but before that the temperature passes to the bearing. That can get temporary heating till  $300^{\circ}\text{-}400^{\circ}\text{C}$ .

BTC bearing is engineered for accepting this kind of stress. The bearings are only turned and grinded, because the speed is lower than 60 RPM and are full complements of balls in order to avoid the risk of damage the cage in the operation previously described.

For these bearings there is no standard production, because every Oven Manufacturer has different sizes. In our catalogue you can find the spare parts for the main European manufacturers.

BTC bearings are produced in open version with one Z for the company that chose the solution of additional oil dropping and cleaning. BTC bearings are also produced in ZZ version, greased with copper grease for the companies that chose the solution of free maintenance.



**BTC****Oven Bearing****OPERATING RANGE:** -30° / 150°C**ECONOMIC OPERATING RANGE:** -30° / 150°C**SHORT-TIME OPERATING RANGE:** 150° / 400°C

Designation	Bore (B)	Diam (D)	Widht (W, Wa)	Speed RPM/min (*)
<b>BTC 40 B8</b>	8	40	17-21	100
<b>BTC 42 B8</b>	8	42	17-21	100
<b>BTC 47 B8</b>	8	47	17-21	100
<b>BTC 50 B8</b>	8	50	17-21	100
<b>BTC 58 B8</b>	8	58	17-21	100
<b>BTC 66 B8</b>	8	66	17-21	100
<b>BTC 30 B6</b>	6	30	22-22	100
<b>BTC 42 B10</b>	10	42	15-18	100
<b>BTC 45 B10</b>	10	45	15-18	100
<b>BTC 50 B10</b>	10	50	17-21	100
<b>BTC 52 B10</b>	10	52	20-23	100
<b>BTC 58 B10</b>	10	58	17-21	100

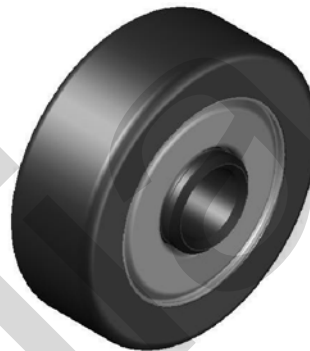
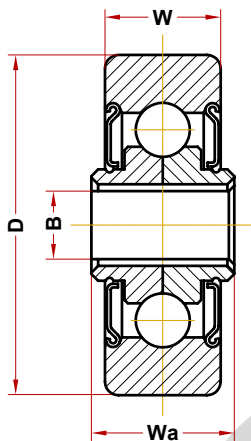
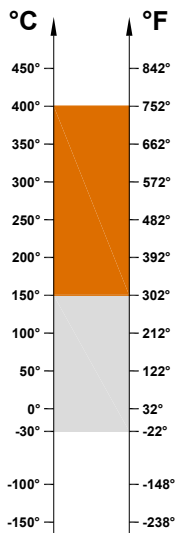
**OPERATING RANGE** is the correct technical range in which can be used the bearing with good operating result.

**ECONOMIC OPERATING RANGE** is the range of temperature in which you can find, according to our study experience and know-how, the better relation price - quality life-time.

**SHORT-TIME OPERATING RANGE** is the range in which the bearing can be used for few minutes but not for permanent use.

# BTC ZZ CPG

## Oven Bearing



OPERATING RANGE: -30° / 150°C

ECONOMIC OPERATING RANGE: -30° / 150°C

SHORT-TIME OPERATING RANGE: 150° / 400°C

Designation	Bore (B)	Diam (D)	Widht (W, Wa)	Speed RPM/min (*)
BTC 40 B8 ZZ CPG	8	40	17-21	100
BTC 42 B8 ZZ CPG	8	42	17-21	100
BTC 47 B8 ZZ CPG	8	47	17-21	100
BTC 50 B8 ZZ CPG	8	50	17-21	100
BTC 58 B8 ZZ CPG	8	58	17-21	100
BTC 66 B8 ZZ CPG	8	66	17-21	100
BTC 30 B6 ZZ CPG	6	30	22-22	100
BTC 42 B10 ZZ CPG	10	42	15-18	100
BTC 45 B10 ZZ CPG	10	45	15-18	100
BTC 50 B10 ZZ CPG	10	50	17-21	100
BTC 52 B10 ZZ CPG	10	52	20-23	100
BTC 58 B10 ZZ CPG	10	58	17-21	100

**OPERATING RANGE** is the correct technical range in which can be used the bearing with good operating result.

**ECONOMIC OPERATING RANGE** is the range of temperature in which you can find, according to our study experience and know-how, the better relation price - quality life-time.

**SHORT-TIME OPERATING RANGE** is the range in which the bearing can be used for few minutes but not for permanent use.